



PENINSULA HYDROPONICS' THE BUZZ

We'll help you grow!



TOP NEWS OF THE MONTH



GET YOUR GREEN FIX: HOUSEPLANTS AVAILABLE

Drop by the shop and take a peek at our *highly* anticipated HOUSEPLANT selection. Our low maintenance beauties include varieties such as Venus Fly Traps, Monstera, Succulents, Spider Plants, Aloe Plants, Pink Princess Philodendrons, and Madagascar Jewels. Quantities are limited and prices range from \$5 - \$25.

LEAF THOSE PESTS BEHIND WITH THESE SAVINGS!

Come by soon to grab a bottle of your favorite IPM product! While in vegetative growth, use an IPM product such as Green Cleaner, weekly. We recommend that you continue on with your established IPM schedule until week 4 or 5 of flowering, when the buds have more fully formed. Some products, such as Lost Coast Plant Therapy, Green Cleaner, and The Amazing Doctor Zymes, can be used safely up until the day of harvest if needed. It is best practice to designate separate days for spraying these IPM products and Monterey B.t. as the active ingredient within B.t. is a beneficial bacteria. **Purchase any size bottle of IPM from the dates of July 1 - July 31, and receive 5% off.**





2

5% OFF

Save your
money &
plants!

SAVE ON ALL IPM PRODUCTS

OUTDOOR GROWERS MUST STAY ON TOP OF APPROPRIATE PEST-CONTROL MANAGEMENT. PREVENTION IS KEY. SAVE 5% ON ANY IPM PRODUCT FOR THE ENTIRE MONTH OF JULY!



*SAFE TO USE THROUGH FLOWERING STAGE.



Fungicide



SAFER
FUNGICIDE



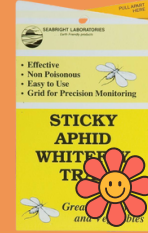
CHAMELEON
HOSE SPRAYER

RAINMAKER
32 OZ

MICROBE-LIFT
BMC



BUILD-A-SOIL
WDG3000



STICKY TRAPS

Spray Bottles

Fungus Gnats

3-in-1

Insecticide, Miticide
& Fungicide



NATRIA
NEEM OIL



BONIDE
SULFUR



THE
AMAZING
DOCTOR
ZYMES



LOST
COAST
PLANT
THERAPY



PURECROP1

GREEN
CLEANER



SAFER
3-IN-1

ATHENA
IPM



Insecticide & Miticide

ORGANISHIELD

MONTEREY
BT

SAFER
INSECT

BONIDE
DIATOMACEOUS EARTH



DOKTOR DOOM
FOGGER
SPIDER MITE KO

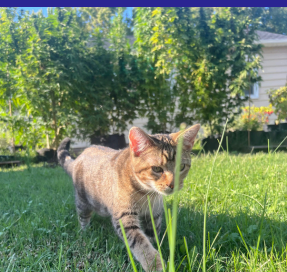
GREENGRO
DEFENSE

PYGANIC



MONTEREY
GARDEN INSECT





MONTEREY B.T.



Organic insect control for caterpillar-type insects, without harming birds, earthworms, honeybees, or ladybugs.

Once caterpillars eat treated foliage, they will immediately stop feeding and damaging plants!

MIKE'S PRO-TIP

Treat your outdoor cannabis plants, weekly, with Monterey B.t. between August and October. Use a wetting agent/surfactant, such as Coco-Wet, in order to attain a more complete and even coverage over your canopy and to help stretch your bottle of B.t.



Monterey Bt Liquid Concentrate is an OMRI-listed biological insecticide, whose active ingredient is the beneficial bacteria *Bacillus thuringiensis*. This biopesticide works by introducing bacterial spores and toxins into the body of insect larvae as it feeds on foliage. These toxins quickly disrupt, and soon completely stop, normal digestive functions of the pest insect. The infected larvae will cease eating within minutes and fully succumb to the effects of the BT and die within 2-5 days. Monterey B.t. may be applied up to and on the day of harvest.

HOW TO MIX AND APPLY:

- Begin applying B.t. in the last week of July/first week of August and repeat at weekly intervals to maintain control.
- Can be applied with a hand sprayer or a hose-end sprayer.
- Always shake or stir thoroughly before use.
- Partially fill sprayer with water before adding the application rate amount of product, then mix in product thoroughly and add remaining amount of water.
- For fruiting/flowering plants, mix 2 fl oz per 3 gallons of water (4 tsp per gallon) for a hand sprayer and apply to all plant foliage to cover an area of 1,000 square feet.
- Spray leaf surfaces thoroughly, top and bottom, for complete control. Reapply after heavy rains.
- Agitate regularly while spraying.
- Use all of spray mixture within 24 hours

houseplants

>>> TIPS FOR THRIVING PLANTS



Monstera Deliciosa & Pink Princess Philodendron

These low maintenance beauties enjoy bright, indirect light. Water plants when the top inch or two of soil is dry. Both plants thrive in humid environments and prefer temperatures between 60 & 85 degrees Fahrenheit. Use a balanced fertilizer monthly during the growing season (Spring & Summer) and reduce fertilization during dormant winter months. Provide a moss pole or other support for the plant to climb. Wipe the leaves with a damp cloth to remove dust and help the plant breathe. Remove any yellowing or damaged leaves to promote new growth. Monitor for pests and treat with insecticidal soap or neem oil.



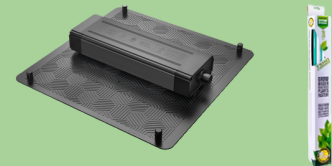
Snake Plant

Snake plants are known for their low-maintenance care requirements. They prefer bright, indirect light but can also tolerate low light conditions. Snake plants are drought-tolerant and should be watered sparingly - water only when the soil is completely dry. These plants thrive in warm temperatures, between 70 and 90 degrees Fahrenheit, and can tolerate a range of humidity levels. Use a well-draining potting mix, such as a cactus and succulent mix. Use a balanced fertilizer monthly during the growing season (Spring & Summer) and reduce fertilization during dormant winter months. Wipe the leaves with a damp cloth to remove dust and help the plant breathe. Monitor for pests and treat with insecticidal soap or neem oil.



Aloe Vera

Aloe Vera thrives in bright, indirect sunlight. Use a well-draining potting mix, such as a cactus and succulent mix. Water sparingly, allowing the soil to dry out completely between waterings. Aloe Vera is drought-tolerant and can be over-watered easily. Maintain temperatures between 55 and 85 degrees Fahrenheit. Aloe doesn't require any additional humidity - your standard indoor environment is adequate. A balanced houseplant fertilizer can be applied sparingly during the Spring and Summer. Rotate the plant periodically to ensure even growth. Remove any dead or damaged leaves. Wipe the leaves with a damp cloth to remove dust and help the plant breathe. Monitor for pests and treat with insecticidal soap or neem oil.



Spider Plant

Spider Plants are relatively low maintenance and thrive with minimal care. They prefer bright, indirect light. If you don't have ideal lighting, consider using a fluorescent or LED grow light to supplement the light your Spider Plant needs. Water when the top inch of soil feels dry. Allow the soil to dry out between waterings. Use distilled water or rainwater if you suspect fluoride in your tap water as Spider Plants are sensitive to fluoride. Spider Plants don't need high humidity but they can benefit from it. They prefer temperatures between 55 and 80 degrees Fahrenheit. Use a balanced fertilizer monthly during the growing season (Spring & Summer) and reduce fertilization during dormant winter months. Monitor for pests and treat with insecticidal soap or neem oil.



Succulent

Graptoveria Succulents prefer bright, indirect light. Consider utilizing a fluorescent or LED grow light. When watering, water the soil thoroughly and allow any excess water to drain out of the pot. Avoid getting water on the leaves as this can lead to rot. Allow the soil to dry out completely between waterings. Graptoverias thrive in warm and dry environments, preferring temperatures between 60 and 80 degrees Fahrenheit. Use a well-draining potting mix, such as a cactus and succulent mix or consider adding vermiculite and pumice to a peat moss mixture. Graptoveria do not require a lot of fertilizer - you can feed them with a balanced fertilizer, diluted to half-strength, monthly during the growing season. Monitor for pests and treat with insecticidal soap or neem oil.





PENINSULA HYDROPONICS' GENETICS MENU



5

MIKE'S FEMINIZED PHOTOPERIOD SEED VAULT



The Blues Collection*

*All of the genetics contained within this line have been crossed with Blue Zushi.

PEANUT BUTTER BREATH*



Peanut Butter Breath is a true treat with her RAUNCHY, EARTHY, and NUTTY scent overload. Her deep purple leaves give way to BOUNTIFUL YIELDS of green and lavender nugs, decorated with bright orange pistils. A natural bronchodilator, this queen will TAKE YOUR BREATH AWAY!

SLURRICANE #7*



Slurricane #7 is cherished for her SWEET flavor profile and KNOCK-OUT EFFECTS. Her buds are both DENSE AND COVERED IN TRICHOMES, giving an exceptionally frosty appearance. As a combination of sweet, fruity and earthy flavors, mixed with a hint of spice, Slurricane #7 TASTES AS GOOD AS SHE LOOKS!

BLUE ZUSHI*

POLLEN DONOR

Blue Zushi is the modern definition of purple candy gas. She is incredibly frosty with her own signature morphology. As she fades into a gorgeous dark purple, her terps become so sweet and loud that they cut through most everything. This exotic beauty makes you a better grower than you truly are.



OUT OF STOCK

GORILLA GLUE #4*

Gorilla Glue #4 is THE tried and true classic with adhesive-like terps. Her HIGH potency, gorgeous structure, and STICKY resin production (HENCE THE NAME) have secured her legendary status. She features dense, frosty buds with a range of vibrant colors, from green to orange.



TROPICAL GELATO*

Tropical Gelato does not disappoint with her orange ICE CREAM TERPS and crystal-laden bud structure. This beauty yields DENSE, PURPLE-GREEN BUDS interlaced with deep orange hues. FAIRLY RESISTANT TO PESTS, this citrus cream varietal stands the test of time.



PHILLY RUNTZ*

Philly Runtz is an extremely popular cultivar and for good reason. Not only does she smell like a BAG OF CANDY, she has massive bag-appeal as her glistening lime green buds give off a mesmerizing purple hue. Philly Runtz offers growers the true trifecta: she's remarkably hardy, easy to grow, and provides an impressive yield.





PENINSULA HYDROPONICS' GENETICS MENU

6



»» MIKE'S FEMINIZED PHOTOPERIOD SEED VAULT

The OG Collection*

*All of the genetics contained within this line have been crossed with FaceOff OG Kush.

FaceOff OG Kush, is a 90's CULT-CLASSIC! A strain not intended for the lightweights, she is revered for her overwhelmingly unique flavor and a skull crushing high - that starts in the head and face, thus the name. Her dense, resinous lime-green buds are covered in red pistils and give off a sweet, earthy, and piney odor. Original genetics via Archive Seeds.



**FACEOFF
OG KUSH***



**SOUR SKUNK
APE***

Sour Skunk Ape is a cross of the legendary Sour Diesel and Skunk Ape Sour (a mashup of Loompa's Headband, Super Skunk, and Stardawg). With such lineage, this sour queen packs quite a punch!



**BLUE
ZUSHI***

Blue Zushi is the modern definition of purple candy gas. She is incredibly frosty with her own signature morphology. As she fades into a gorgeous dark purple, her terps become so sweet and loud that they cut through most everything.



**PERMANENT
MARKER***

Permanent Marker is a potent strain that leaves a lasting effect. Boasting a minty aroma with hints of pepper, gas, and cookies, as well as sky-high THC levels, it's no wonder this strain has become so popular.

**UK
CHEESE***

UK Cheese is a revered strain, known for her particularly ripe stench. A 50/50 hybrid, UK Cheese is a perfect blend for the body and mind - a fan favorite among daytime smokers.



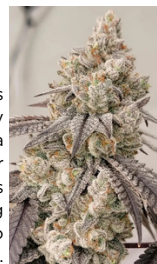
**VAMPIRE
SLAYAH
#20***

Vampire Slayah #20 is a dense and frosty beauty. With a resilient structure, strong pest resistance, and fast flowering time, this strain thrives in both indoor and outdoor environments.



**FUGAZI
FUNK***

Fugazi Funk is in the house!! Think funky glue kush cake terps and a "knockout" high, even for seasoned smokers. This size-queen has crazy bag appeal, and is super easy to trim.



**TRIANGLE
MINTS***

Triangle Mints, ALSO KNOWN AS THE WEDDING CAKE CUT, is a resin-coated, GORGEOUS green Queen known for her DENSE BUDS. She is STICKY, SWEET and FUEL all at once.



**GARLIC
COCKTAIL***

Garlic Cocktail (GMO x Mimosa) is an indica cross without the sedative affect. She comes in with a funky, fruity nose of sweet, rotting clementines and garlicky funk.



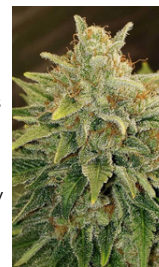
UB-40*

UB40 is a cross between Sherb Cream Pie and Pure Michigan. An all around performer, she produces dark, exceptionally dense and sticky nugs.



**SHERB
CREAM PIE***

Sherb Cream Pie produces large yields of incredibly frosty bud with a deep purple hue. Her terps give off an overwhelming candy nose with hints of creamy gas.



**HONEY
BANANA***

Honey Banana creates the best banana-flavored rosin on the market. This Strawnana leaning cross that produces beautiful, dank-smelling flowers that are covered in frost trichomes.



APRIL'S GARDEN RECIPES

GARDEN STUFFED SQUASH

>>> OH MY GOURD GOOD

In large pot, cover squash with water and bring to a boil. Reduce heat, cover and simmer until squash are tender but firm, about 8 minutes. Drain squash and cool. Trim stems and cut squash in half lengthwise. Remove pulp and chop into small pieces. Reserve squash shells.

Preheat oven to 400 degrees. Melt butter in a skillet over medium heat, and saute bell pepper and onion in butter until soft. Add squash pulp (about 1 cup) and saute until soft. Turn off heat and add tomatoes, cheese, bread crumbs, and seasoned salt. Mix well.

Place hollowed squash shells in a baking dish, and sprinkle the inside of each with kosher salt and pepper. Spoon squash mixture into each shell. Top with additional bread crumbs and drizzle top with melted butter and bacon. Bake for 20 to 25 minutes until top is golden.

INGREDIENTS:

- 6 Medium Yellow Summer Squash (lemon squash is ideal, but crookneck/straightneck work too)
- 1/2 Cup Green Bell Pepper, diced
- 1 Cup Onion, finely chopped
- 1 Cup Tomatoes, chopped and seeded
- 1/2 Cup Sharp Cheddar Cheese, shredded
- 1/2 Cup Italian Bread Crumbs
- Pinch of Seasoned Salt
- 2/3 tsp Kosher Salt
- Ground Black Pepper
- Butter (for sauteing)
- 4 Slices of Bacon, fried until crisp and crumbled (omit for a vegetarian version of recipe)

